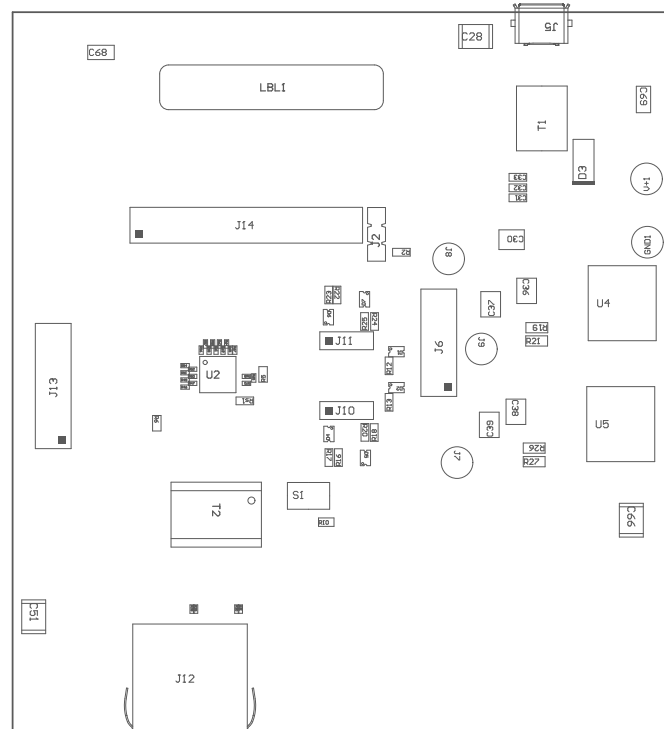


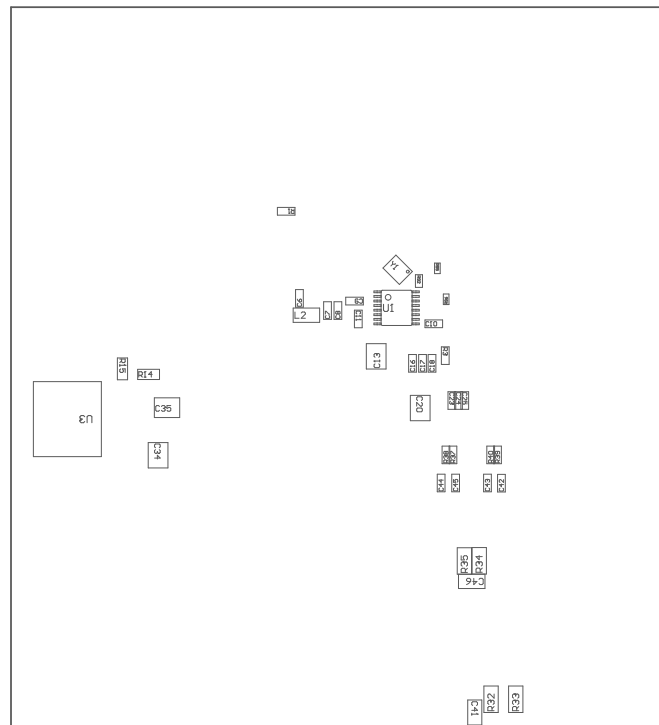
ZZ4 ■ These assemblies must comply with workmanship standards IPC-A-610 Class 2, unless otherwise specified.

ZZ5 ■ Place SH-J2 on pins 1 and 2



COMPONENTS MARKED 'DNP' SHOULD NOT BE POPULATED.
ASSEMBLY VARIANT: 001

| | | | |
|----------------------------------|----------------------------------|--------|---------------------------------|
| PCB VIEWED FROM TOP SIDE | BOARD #: SU601202 | REV: B | SUN REV: Not in version control |
| | TID #: N/A | | |
| PLOT NAME = Top Assembly Drawing | GENERATED : 11/5/2024 4:43:58 PM | | TEXAS INSTRUMENTS |



COMPONENTS MARKED 'DNP' SHOULD NOT BE POPULATED.
ASSEMBLY VARIANT: 001

| | | | |
|-------------------------------------|----------------------------------|--------|---------------------------------|
| PCB VIEWED FROM BOTTOM SIDE | BOARD #: SU601202 | REV: B | SUN REV: Not in version control |
| | TID #: N/A | | |
| PLOT NAME = Bottom Assembly Drawing | GENERATED : 11/5/2024 4:43:58 PM | | TEXAS INSTRUMENTS |